



**ALASKA DIVISION OF HOMELAND SECURITY &
EMERGENCY MANAGEMENT**
SITUATION REPORT 24-009 • January 09, 2024



Toll-Free 1.800.478.2337

Anchorage Area 907.428.7000

SEOC 907.428.7100

<p><u>SEOC Preparedness Level</u> Level 1 – Routine Operations</p>	<p>http://ready.alaska.gov</p>	<p><u>National Terrorism Advisory System:</u> Read the NTAS Bulletin here</p>
<p>Maritime Security (MARSEC) Level: 1- Minimum Appropriate Security Measures</p>	<p>WHO Novel Coronavirus Pandemic (COVID-19): 2019 Novel Coronavirus</p>	<p><u>Alaska Military Installation Force Protection Level:</u> FPCON Bravo</p>

(Significant changes from previous situation reports are red.)

Significant Issues:

Wrangell Landside Disaster:

State Individual Assistance application hotline and website is open for Wrangell and Prince of Wales Island residents at <https://www.ready.alaska.gov/Recovery/IA> or by phone 1(844) 445-7131. The deadline to apply for State Individual Assistance is January 27, 2024.

Quinhagak Power Outage Disaster:

State Individual Assistance application hotline and website is open for Quinhagak residents at <https://www.ready.alaska.gov/Recovery/IA> or by phone 1 (844) 445-7131. The deadline to apply for State Individual Assistance is March 2, 2024.

Hughes Water Break:

Repairs to the broken pipes are in progress. Technicians were able to valve off the school line and are currently trying to reconnect the service line back to the school. The remaining service lines should be repaired today so that the downtown loop can be circulating by midnight. The SEOC continues to monitor the community.

Cold Bay Power Outage:

Technicians were able to isolate a damaged buried line and are in the process of repairing it. The fire station is being used as an emergency shelter until repairs are completed. The SEOC will continue to monitor the event.

State of Alaska Department of Health (DOH)

The DOH stands ready to assist with all aspects of public health and, in the event of a public health emergency, is supported by the SEOC and other state departments as required. For current information, see: <https://health.alaska.gov/dph/Pages/default.aspx>
<https://health.alaska.gov/dph/Emergency/Pages/prepared/default.aspx>

NTAS Bulletin

The U.S. Department of Homeland Security issued an updated National Terrorism Advisory Bulletin on May 24, 2023. The current and expired bulletins can be viewed at the below link.

<https://www.dhs.gov/national-terrorism-advisory-system>

Travel Alerts and Conditions

For current driving conditions, dial 511 or visit: <https://511.alaska.gov/>

Barry Arm Landslide / Tsunami Risk

For the latest information on the Barry Arm Landslide and Tsunami risk, click here:

<https://dggs.alaska.gov/hazards/barry-arm-landslide.html>

Earthquakes

United States Geological Service (USGS) Earthquake Information: <http://earthquake.usgs.gov/>

National Tsunami Warning Center: <http://tsunami.gov/>

Alaska Volcanoes

Kanaga Alert Level: **Advisory** and Aviation Color Code: **Yellow**

Great Sitkin Alert Level: **Watch** and Aviation Color Code: **Orange**

Shishaldin Alert Level: **Advisory** and Aviation Color Code: **Yellow**

Trident Alert Level: **Advisory** and Aviation Color Code: **Yellow**

For Alaska Volcano updates, go to: <https://www.avo.alaska.edu/>

Air Quality Index (AQI) Advisories

For the most up-to-date Air Quality Index Advisories:

<http://dec.alaska.gov/Applications/Air/airtoolsweb/Home/Index>

Spills of Oil and Hazardous Substances

The Alaska Division of Environmental Conservation (ADEC) Spill Prevention and Response page is located at:

<https://dec.alaska.gov/spar/>

Alaska Cyber Security Information

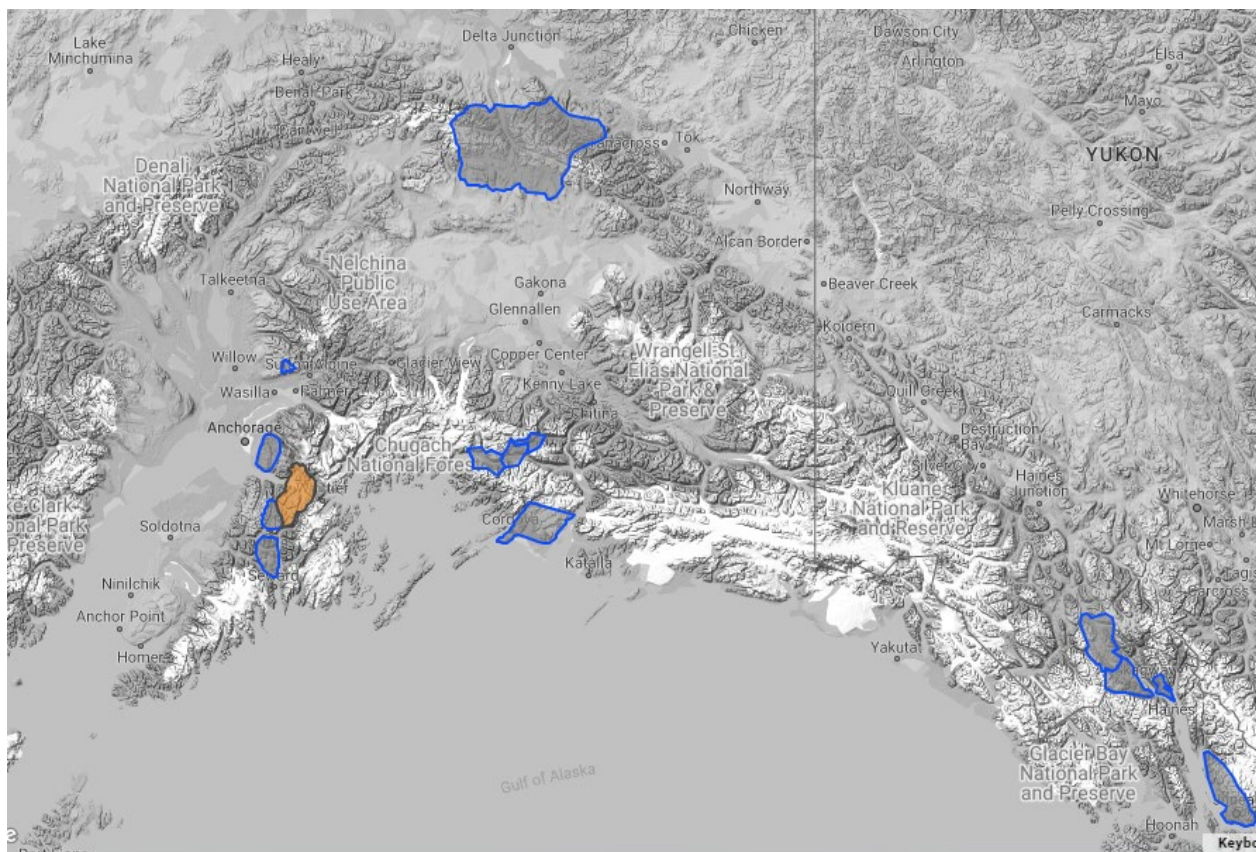
State Employees may sign up for cybersecurity notifications and alerts at

<https://oit.alaska.gov/security>

Cybersecurity and Infrastructure Security Agency (CISA)-Cybersecurity Services and Tools:

www.cisa.gov/free-cybersecurity-services-and-tools

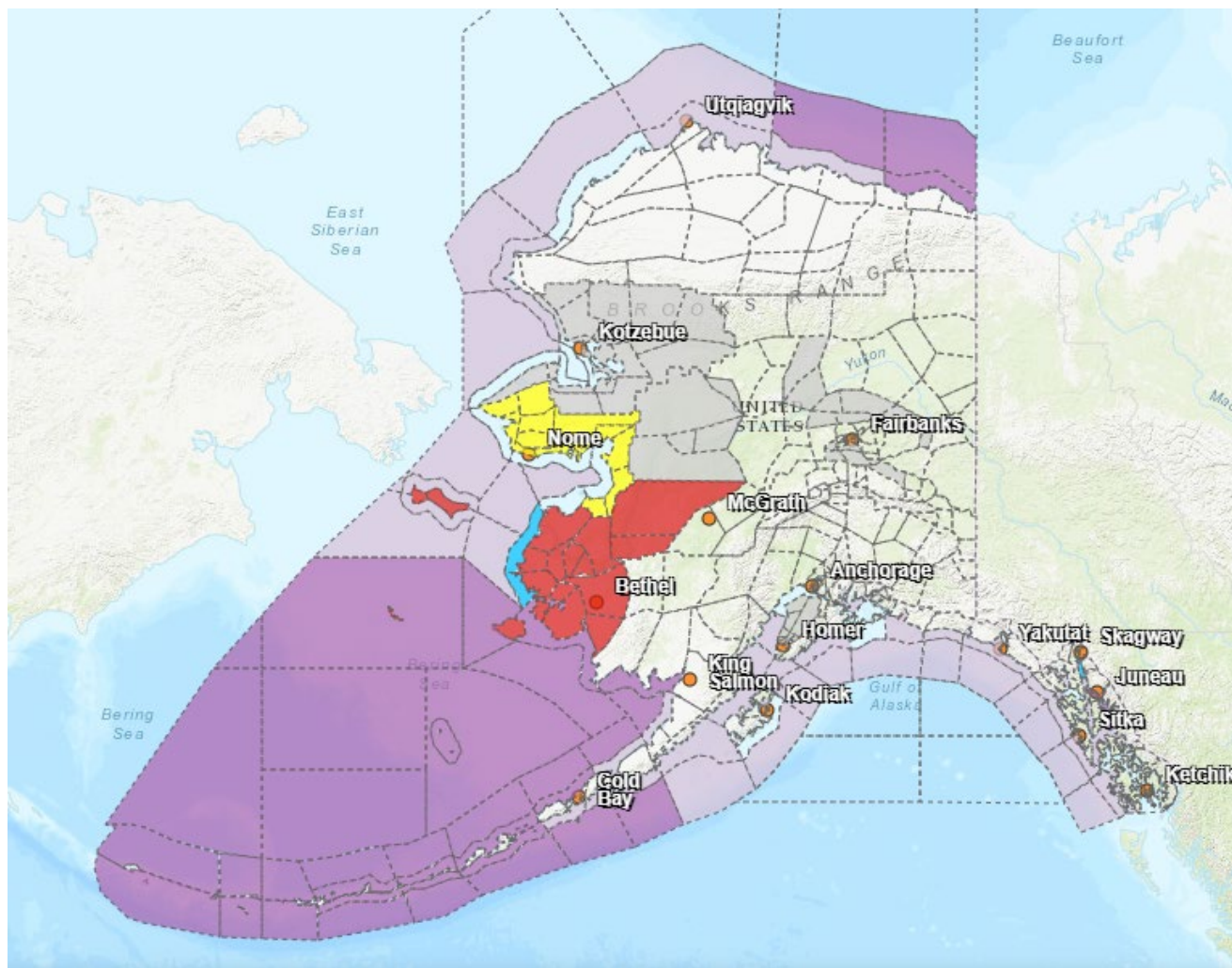
Avalanche Hazards:



- Valdez – Moderate at elevations above 3000ft
- Cordova – Moderate at elevations above 2000ft
- Turnagain Pass – Considerable at mid and high elevations

For more information and the most current avalanche conditions, go to <https://alaskasnow.org>

Significant Weather:



Winter Storm Watch

- Yukon Delta Coast from 3am Wednesday until 9am Friday
- St. Lawrence Island from noon Wednesday until 9am Friday
- Lower Yukon River, Lower Yukon and Innoko Valleys from 9am Wednesday until 9am Friday
- Southern Seward Peninsula Coast from Wednesday afternoon until Friday morning
- Interior Seward Peninsula from Wednesday afternoon through Friday morning
- Eastern Norton Sound and Nulato Hills from 9am Wednesday until 9am Friday
- Bering Strait Coast from Wednesday afternoon through Friday morning

Winter Storm Warning

- St. Lawrence Island from noon Wednesday until 9am Friday
- Yukon Delta Coast from 3am Wednesday until 9am Friday
- Lower Yukon River, Lower Yukon and Innoko Valleys from 9am Wednesday until 9am Friday

Blizzard Warning

- Kuskokwim Delta Coast and Nunivak Island from midnight tonight until Noon Wednesday

Special Weather Statement

- Dalton Highway Summits, White Mountains and High Terrain South of the Yukon River for strong winds and blowing snow Wednesday night through Thursday night.
- Delta Junction, Tanana Flats, and Nenana for strong winds Wednesday night through Thursday night.

- South Slopes of the Western Brooks Range, Noatak Valley, Kivalina and Red Dog Dock, Lower Kobuk Valley, Baldwin Peninsula, Northern Seward Peninsula, Upper Kobuk Valley, Shishmaref, Lower Koyukuk Valley, and Middle Yukon Valley for strong winds and blowing snow Wednesday night through Thursday night.
- Western Kenai Peninsula for areas of dense fog this morning.

For more information and the most current weather, Watches / Warnings / Advisories go to:
<https://www.weather.gov/arh/>

The Next Situation Report will be **January 10, 2024**. A significant change in the situation or the threat level will prompt an interim report. This report is posted on the internet at
<https://ready.alaska.gov/sitrep>.

To register for email distribution, go to <http://list.state.ak.us/mailman/listinfo/dhsem.situation.report>.
Direct questions regarding this report to the SEOC at 907-428-7100 or seoc@alaska.gov.